

Introducing PC Probe II

What is PC Probe II?

PC Probe II is a utility that monitors the computer's vital components, and detects and alerts you of any problem with these components. PC Probe II senses fan rotations, CPU temperature, and system voltages, among others. Because PC Probe II is software-based, you can start monitoring your computer the moment you turn it on. With this utility, you are assured that your computer is always at a healthy operating condition.

Where can I get PC Probe II?

The PC Probe II is available from the support CD that came with your motherboard or system package. Refer to the motherboard/system documentation for details on how to use the support CD.

Is my system qualified for PC Probe II?

Before installing PC Probe II, check if your system meets the following requirements:

- ASUS motherboard with ASUS ACPI interface
- Windows® 2000/XP/XP 64-bit/2003/2003 64-bit OS

Installing PC Probe II

To install PC Probe II on your computer:

1. Place the support CD to the optical drive. The **Drivers** installation tab appears if your computer has an enabled Autorun feature.



If Autorun is not enabled in your computer, browse the contents of the support CD to locate the setup.exe file from the ASUS PC Probe II folder. Double-click the setup.exe file to start installation.

2. Click the **Utilities** tab, then click **ASUS PC Probe II**.
3. Follow the screen instructions to complete installation.

Launching PC Probe II

You can launch the PC Probe II right after installation or anytime from the Windows® desktop.

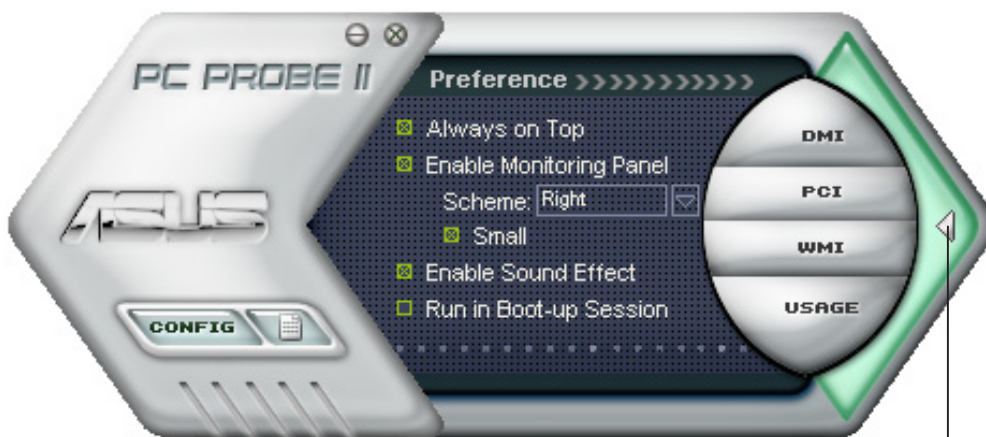
To launch the PC Probe II from the Windows® desktop, click **Start > All Programs > ASUS > PC Probe II**. The PC Probe II main window appears.

After launching the application, the PC Probe II icon appears in the Windows® taskbar. Click this icon to close or restore the application.

Using PC Probe II

Main window

The PC Probe II main window allows you to view the current status of your system and change the utility configuration. By default, the main window displays the **Preference** section. You can close or restore the **Preference** section by clicking on the triangle on the main window right handle.

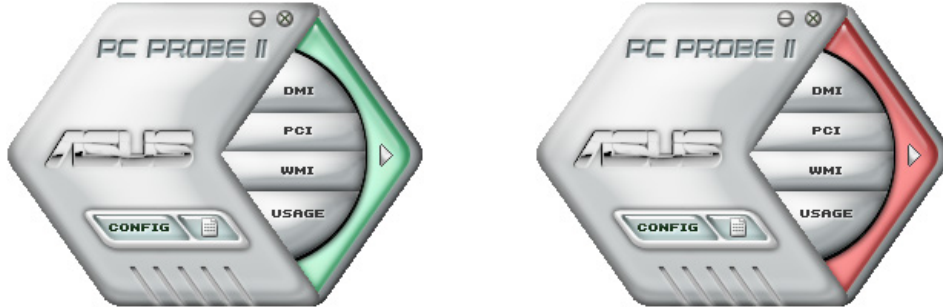


Click to close the Preference panel

Button	Function
	Opens the Configuration window
	Opens the Report window
	Opens the Desktop Management Interface window
	Opens the Peripheral Component Interconnect window
	Opens the Windows Management Instrumentation window
	Opens the hard disk drive, memory, CPU usage window
	Shows/Hides the Preference section
	Minimizes the application
	Closes the application

Sensor alert

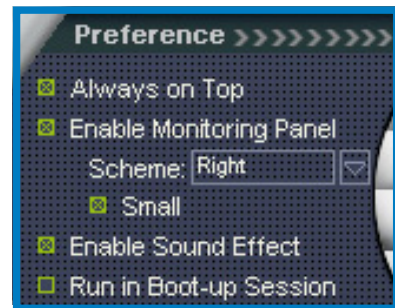
When a system sensor detects a problem, the main window right handle turns red. Refer to the illustration below.



When displayed, the monitor panel for that sensor also turns red. Refer to the **Monitor panels** section for details.

Preferences

You can customize the application using the Preference section in the main window. Click the box before each preference to activate or deactivate. Refer to the table below.



Preference	When checked
Always on top	the utility main window always appear on top of all opened windows
Enable Monitoring Panel	the utility displays large (hexagonal) or small (rectangular) monitor panels for system sensors. See the next section for details
Enable Sound Effect	the utility plays a sound everytime you click a button on the interface
Run in Boot up Session	the utility launches automatically everytime the computer starts

Hardware monitor panels

The hardware monitor panels display the current value of a system sensor such as fan rotation, CPU temperature, and voltages.

The hardware monitor panels come in two display modes: hexagonal (large) and rectangular (small). When you check the **Enable Monitoring Panel** option from the **Preference** section, the monitor panels appear on your computer's desktop.



Large display



Small display

Changing the monitor panels position

To change the position of the monitor panels in the desktop, click the arrow down button of the **Scheme** options, then select another position from the list box. Click **OK** when finished.





Moving the monitor panels

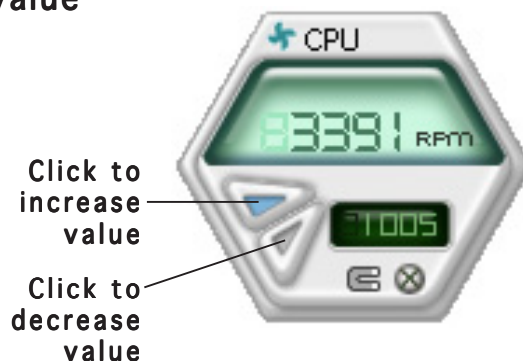
All monitor panels move together using a magnetic effect. If you want to detach a monitor panel from the group, click the horseshoe magnet icon. You can now move or reposition the panel independently.



Adjusting the sensor threshold value

You can adjust the sensor threshold value in the monitor panel by clicking the  or  buttons. You can also adjust the threshold values using the **Config** window.

You cannot adjust the sensor threshold values in a small monitoring panel.



Monitoring sensor alert

The monitor panel turns red when a component value exceeds or is lower than the threshold value. Refer to the illustrations below.



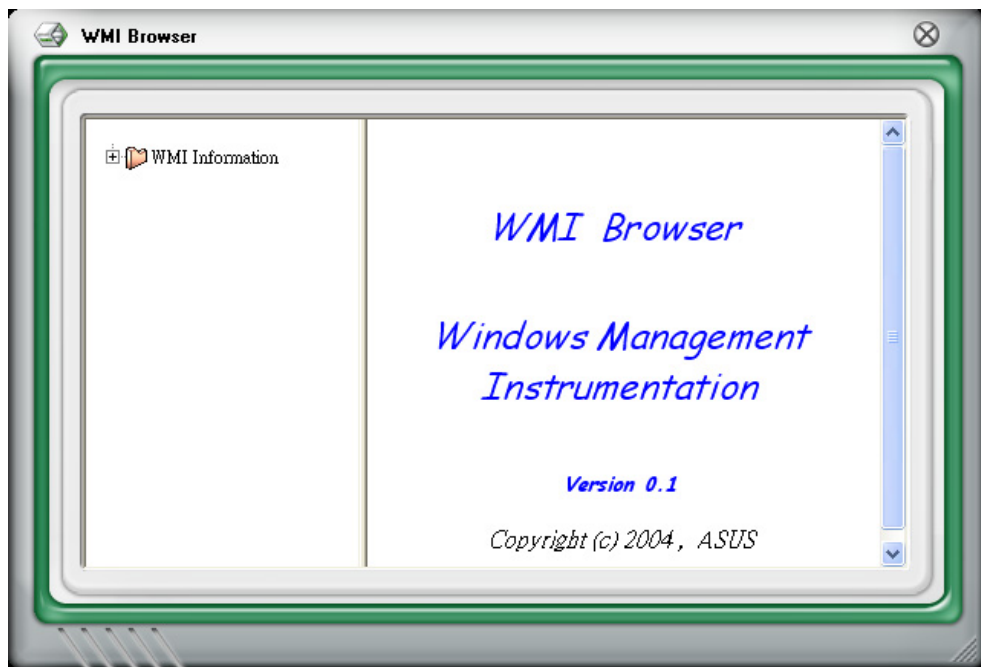
Large display



Small display

WMI browser

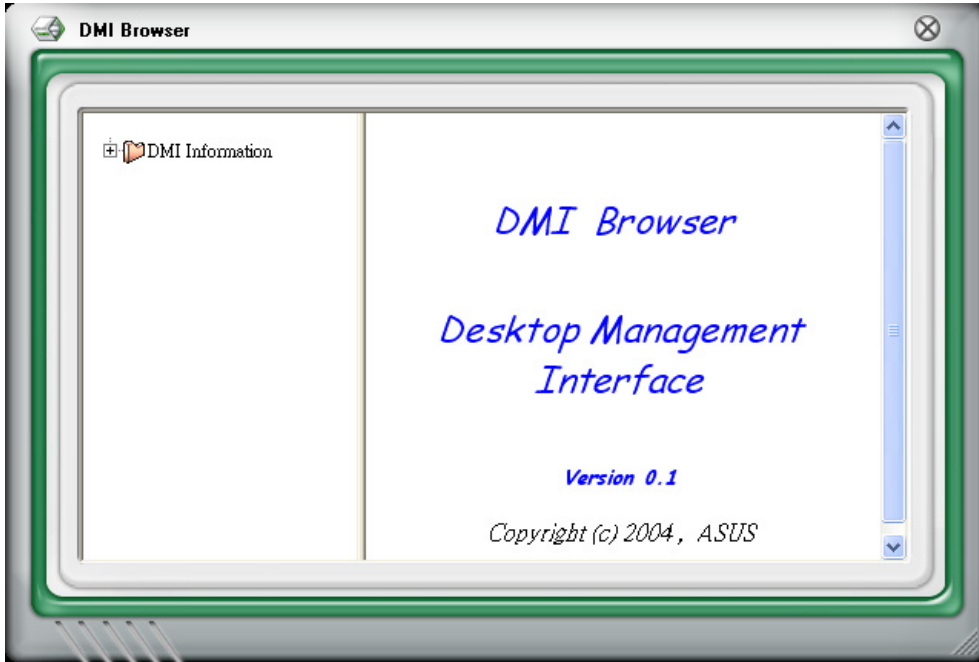
Click **WMI** to display the WMI (Windows Management Instrumentation) browser. This browser displays various Windows® management information. Click an item from the left panel to display on the right panel. Click the plus sign (+) before **WMI Information** to display the available information.



You can enlarge or reduce the browser size by dragging the bottom right corner of the browser.

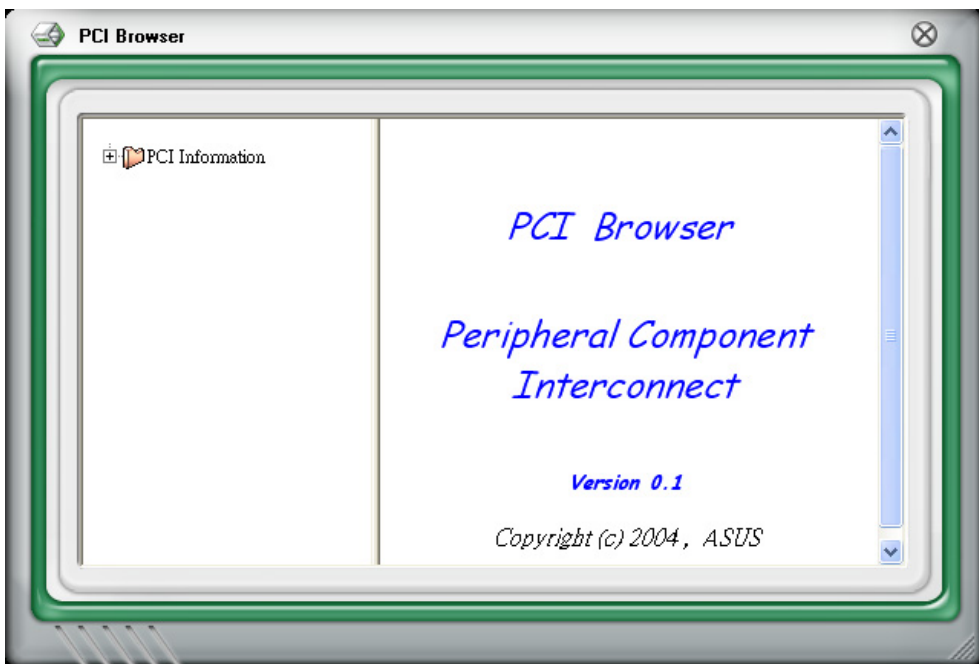
DMI browser

Click **DMI** to display the DMI (Desktop Management Interface) browser. This browser displays various desktop and system information. Click the plus sign (+) before **DMI Information** to display the available information.



PCI browser

Click **PCI** to display the PCI (Peripheral Component Interconnect) browser. This browser provides information on the PCI devices installed on your system. Click the plus sign (+) before the **PCI Information** item to display available information.

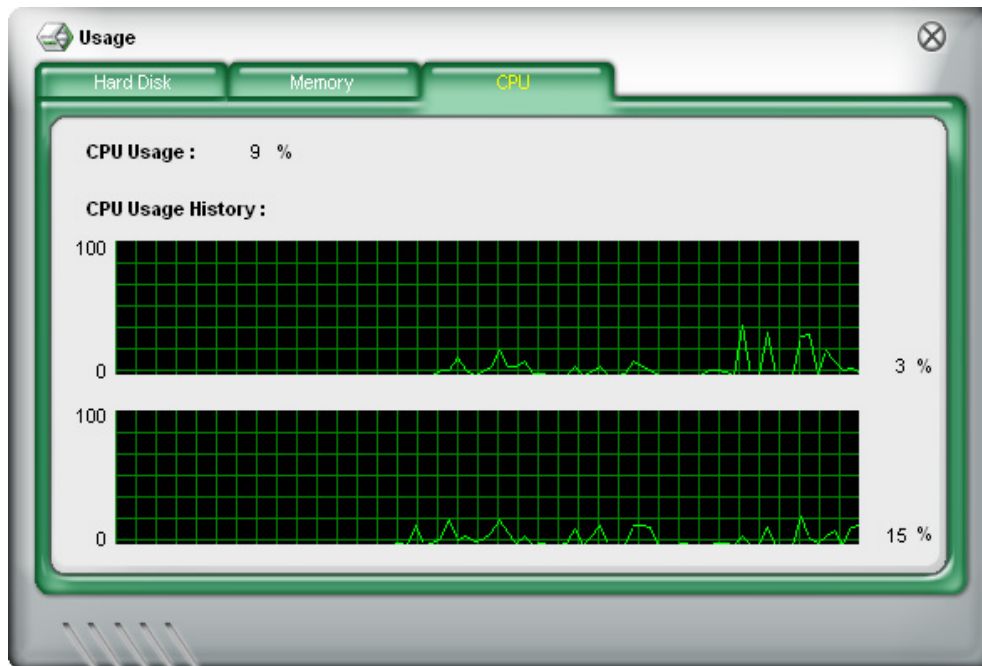


Usage

The **Usage** browser displays real-time information on the CPU, hard disk drive space, and memory usage. Click **USAGE** to display the Usage browser.

CPU usage

The **CPU** tab displays real-time CPU usage in line graph representation. If the CPU has an enabled Hyper-Threading*, two separate line graphs display the operation of the two logical processors.



*On Intel® CPUs only.

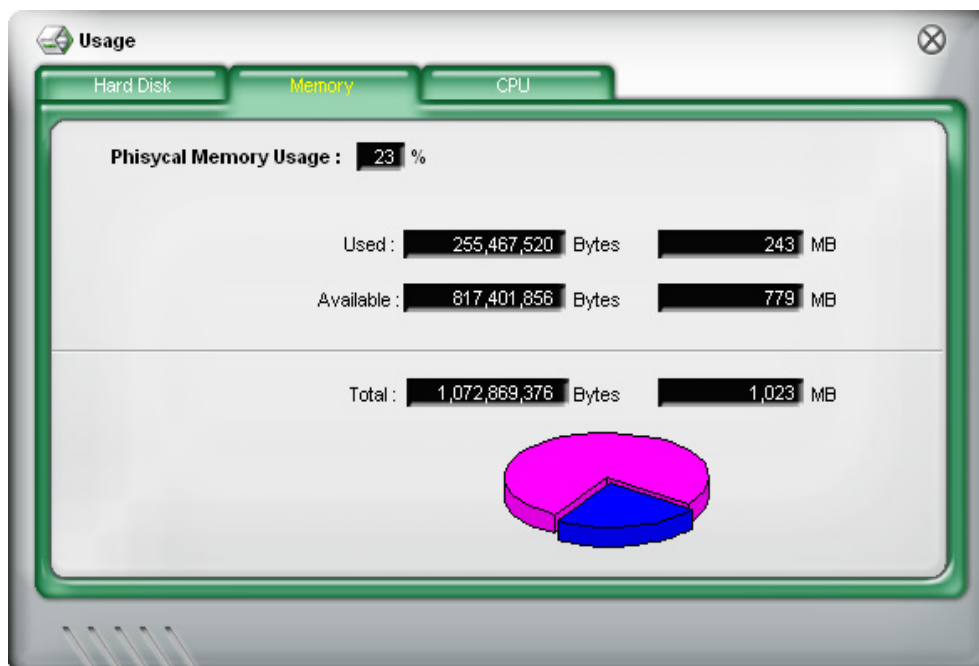
Hard disk drive space usage

The **Hard Disk** tab displays the used and available hard disk drive space. The left panel of the tab lists all logical drives. Click a hard disk drive to display the information on the right panel. The pie chart at the bottom of the window represents the used (blue) and the available HDD space.



Memory usage

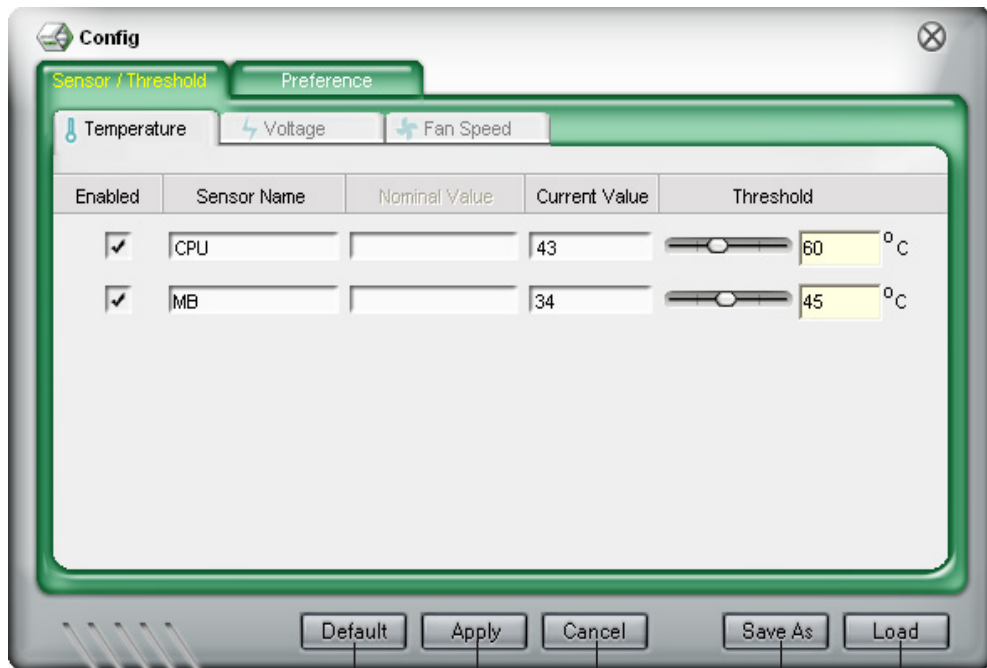
The Memory tab shows both used and available physical memory. The pie chart at the bottom of the window represents the used (blue) and the available physical memory.



Configuring PC Probe II

Click  to view and adjust the sensor threshold values.

The **Config** window has two tabs: **Sensor/Threshold** and **Preference**. The **Sensor/Threshold** tab enables you to activate the sensors or to adjust the sensor threshold values. The **Preference** tab allows you to customize sensor alerts, change temperature scale, or enable the Q-Fan feature.*



Loads the default threshold values for each sensor

Applies your changes

Cancels or ignores your changes

Loads your saved configuration
Saves your configuration

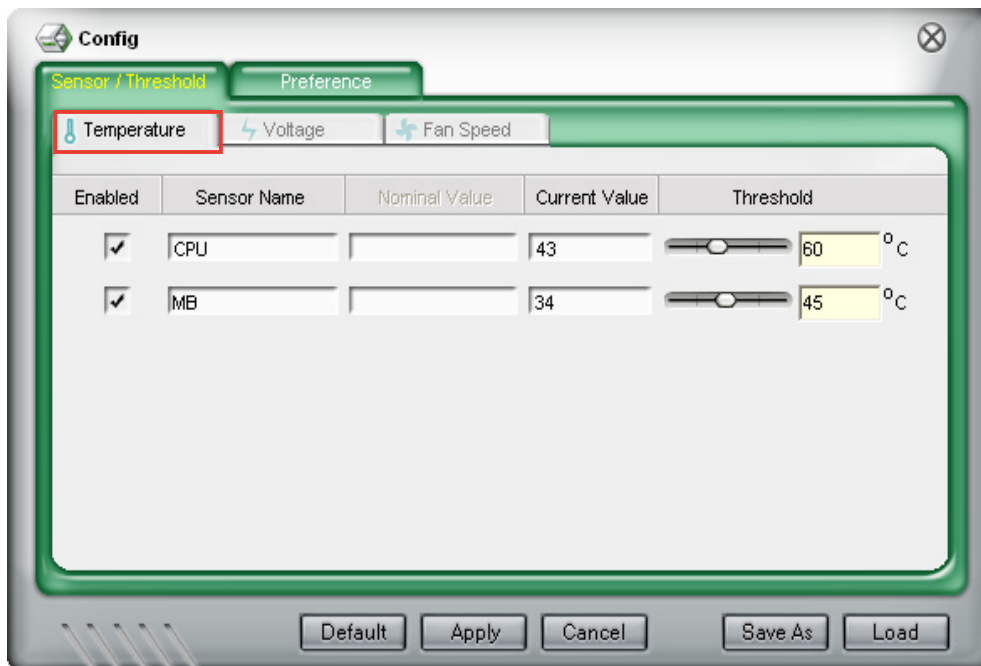
*Available on some motherboards only.

Sensor/Threshold configuration

The **Sensor/Threshold** tab has three tabs: **Temperature**, **Voltage**, and **Fan Speed**. Click a tab to display the sensors for that group.

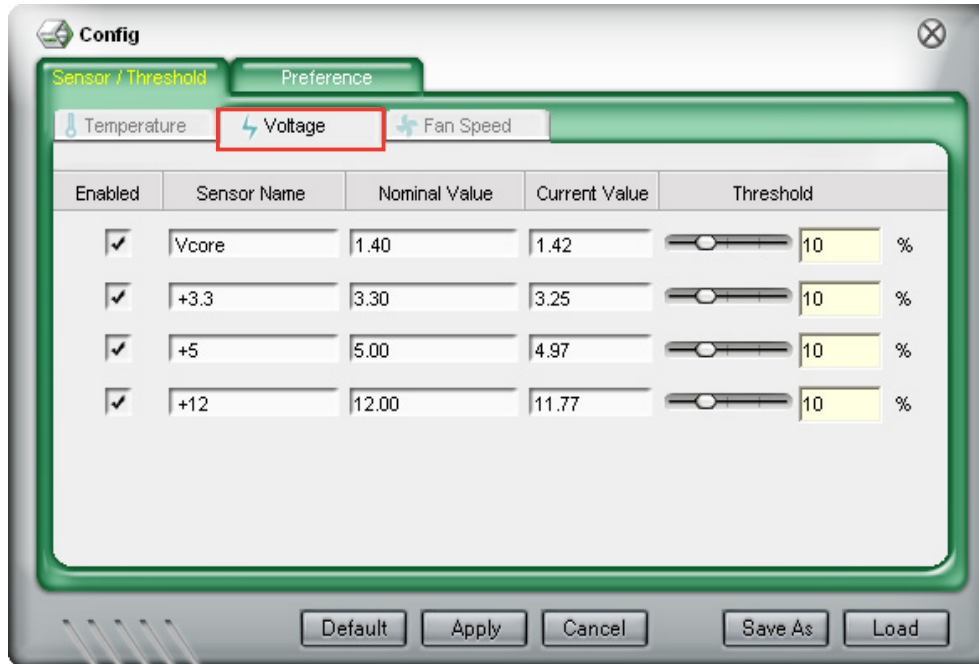
Temperature

The **Temperature** tab displays the CPU and motherboard temperature sensors, including the current and threshold values. When the CPU/MB temperature exceeds the threshold temperature, the sensor sends an alert to the user through the monitor panels, a pop-up message, or a sound alert.



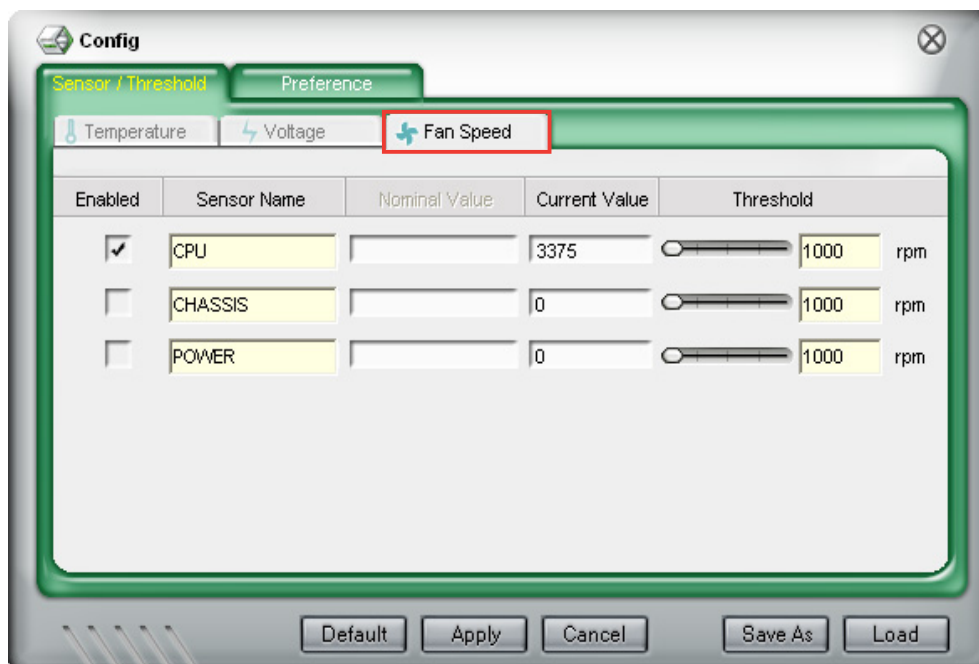
Voltage

The **Voltage** tab displays the system voltages sensors, including the nominal, current and threshold values. When a system voltage is less or more than the threshold percentage, the sensor sends an alert to the user through the monitor panels, a pop-up message, or a sound alert.



Fan Speed

The **Fan Speed** tab displays the current and threshold rotations (per minute) of the CPU, chassis, and power fans. When a fan rotation is less than the threshold rotation, the sensor sends an alert to the user through the monitor panels, a pop-up message, or a sound alert.



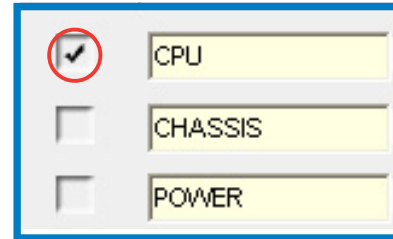
Enabling a sensor



The utility monitors all enabled sensors and disregards disabled sensors.

To enable a sensor:

1. Click a sensor tab.
2. Click the box on the **Enabled** column before the sensor that you want to activate.
3. Click **Apply**.



Customizing the sensor name



You can only customize the name of the **Fan Speed** sensors.

1. Move the cursor to the **Sensor Name** box.
2. Key-in the new sensor name.
3. Click **Apply** to save your changes; otherwise, click **Cancel** to disregard your changes.

Adjusting the sensor threshold value

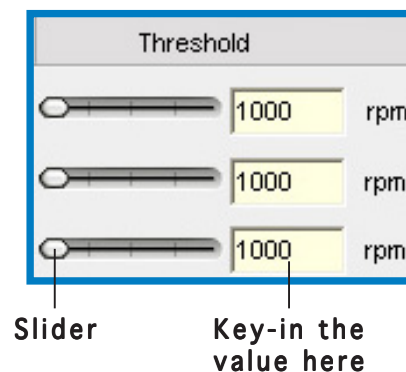
To adjust the sensor threshold value:

1. Move the slide to the left (to decrease) or right (to increase) until the desired value appears on the threshold box.

or

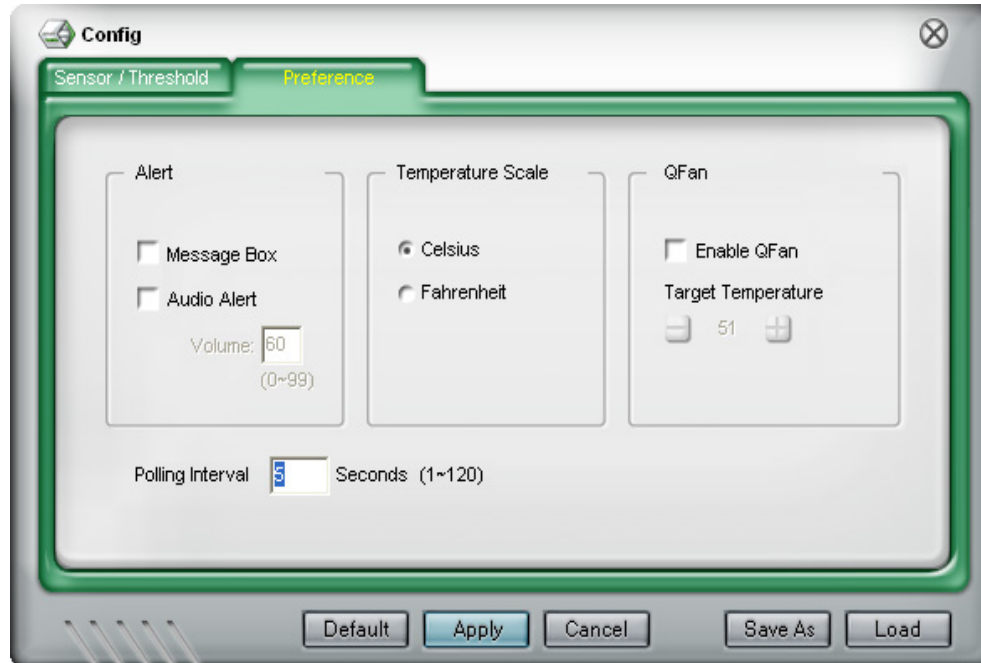
Use the mouse to highlight the current threshold value, then key-in the new value.

2. Click **Apply** to save your changes; otherwise, click **Cancel** to disregard your changes.



Preference

The Preference tab of the Config window allows you to set the alert mode, temperature scale, and polling interval. This tab also lets you enable the ASUS motherboard Q-Fan* feature.



*Not all ASUS motherboards support this feature.

Alert

The **Alert** section lets you select the type of sensor alert. Check the box before an option to activate.

Message Box a message box appears on screen when the sensor detects a breach on the threshold value.

Audio Alert a sound alert is played when the sensor detects a breach on the threshold value. Use the **Volume** box to adjust the sound alert volume.

Temperature Scale

Allows you to convert the temperature scale to degree Celsius (°C) or degree Fahrenheit (°F). The temperature monitor panels automatically converts the value (from °C to °F or vice-versa) when you change the temperature scale.

QFan

This section allows you to enable the **Q-Fan** feature and adjust the CPU **Target Temperature**. The Q-Fan feature is automatically activated when the CPU exceeds the specified target temperature.

Polling Interval

The polling interval is the time interval for a sensor to monitor a particular component. The default polling interval is five seconds.

To adjust the polling interval:

1. Move the cursor to the **Polling interval** box.
2. Key-in the new polling interval, then click **Apply** to save your changes; otherwise, click **Cancel** to ignore.



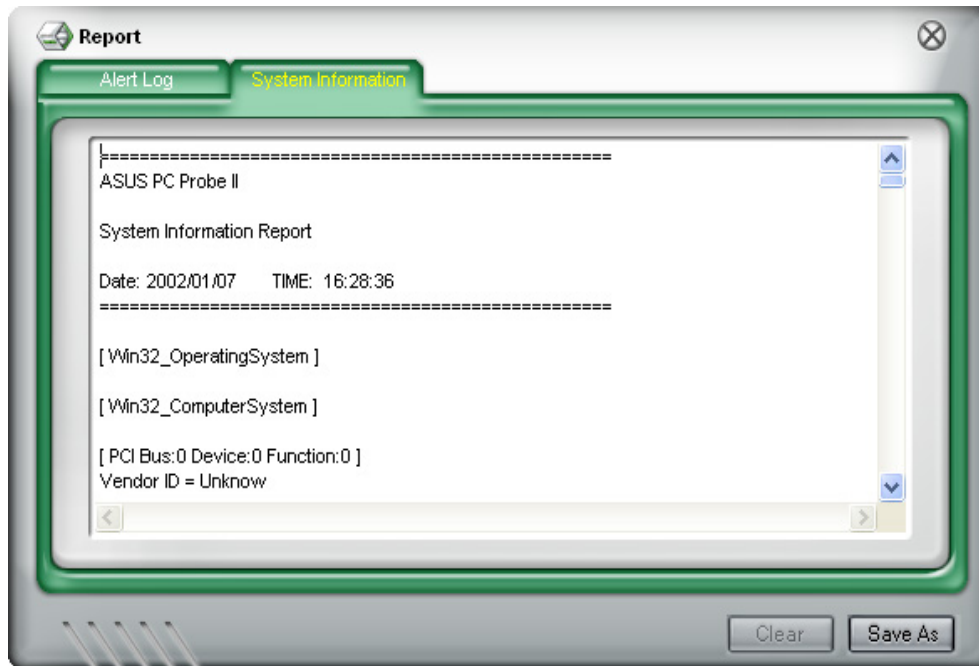
Always click **Apply** after changing a preference to save your settings.

Viewing reports and alert logs

Click  to view the system information and alert logs.

System Information

Displays the system information report including the operating system, BIOS, and PCI information. These information are auto-detected by the utility.



Alert Log

The **Alert Log** tab displays all normal and critical events detected by the sensors, including the sensor value at the time of the event. Press **Clear** to clear the log.

